

Signal crayfish (*Pacifastacus leniusculus*)

Synonyms:

- American signal crayfish, crawfish, North American signal crayfish, Cimwch dir Croyw (Welsh)
- *Astacus leniusculus*

Consignments likely to come from: unknown

Use: may be used for human consumption

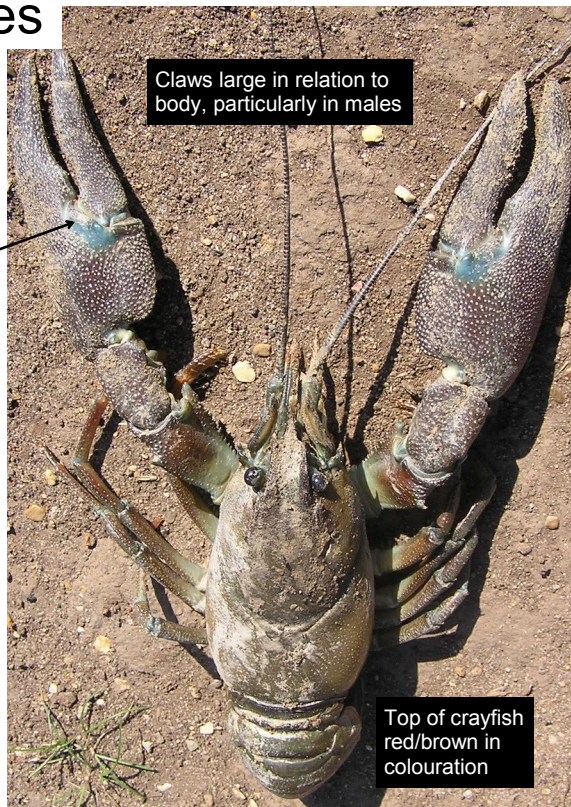
Identification difficulty: difficult to distinguish between crayfish species, seek definitive identification.

Identification information:

- resemble a small lobster
- claws bright red underneath with small turquoise / white blotch on the upper side of hinge
- claws large in relation to body
- top of body red / brown in colouration
- up to 16cm long



Key ID Features



Similar species

There are five crayfish species listed as Species of Union Concern:

Pastifastacus leniusculus (signal crayfish)

Orconectes limosus (spiny-cheek crayfish)

Orconectes virilis (virile crayfish)

Procambarus clarkii (red swamp crayfish)

Procambarus sp. (marbled crayfish)

These could be confused with other species, seek definitive identification from nss@apha.gsi.gov.uk.

Pastifastacus leniusculus
(signal crayfish)



Orconectes limosus
(spiny cheeked crayfish)



Orconectes virilis
(virile crayfish)



Procambarus clarkii
(red swamp crayfish)



Procambarus sp.
(marbled crayfish)

